



### 洛阳金鹭硬质合金工具有限公司

地 址：中国·河南省洛阳市国家高新技术产业开发区滨河北路68号  
电 话：+86-379-61101002      传 真：+86-379-61101766  
邮 箱：geotools@cxtc.com      网 址：www.xtcgtl.com

### LUOYANG GOLDEN EGRET GEOTOOLS CO.,LTD.

ADD: No.68, North Binhe Road, National High&New Tech Industry Zone, Luoyang, Henan, China  
TEL: +86-379-61101002      Fax: +86-379-61101766  
Email: geotools@cxtc.com      Http: en.xtcgtl.com



股票代码 厦门钨业 600549  
STOCK CODE OF XTC 600549

**洛阳金鹭硬质合金工具有限公司**  
LUOYANG GOLDEN EGRET GEOTOOLS CO.,LTD.



**COMPANY  
PROFILE**

企业简介

**A**

企业篇  
**ENTERPRISE**

---

产品篇  
**PRODUCTS**

---

荣誉篇  
**AWARDS & HONORS**

---

**XTC  
LUOYANG**



## XTC OVERVIEW

### 厦钨简介



厦门钨业是在上海证券交易所上市的集团型股份公司，中国上市公司500强、国家重点高新技术企业、国家火炬计划钨材料产业基地、国家首批发展循环经济示范企业。

厦门钨业主要从事钨精矿、钨钼中间制品、粉末产品、丝材板材、硬质合金、切削工具等各种钨系列产品；稀土氧化物、稀土金属、稀土发光材料、磁性材料和稀土贮氢、系列锂电池材料等各种稀土材料和能源新材料的生产、销售与研发。公司拥有从钨钼矿山→冶炼→深加工→钨钼二次资源回收的完整的钨产业链，以及稀土矿山开发、冶炼加工、稀土新材料、科研应用等完整的稀土产业体系。依托厦钨设有“国家钨材料工程技术研究中心”和“能源新材料研究中心”。

厦钨以“让员工实现自我价值，使用户得到满意服务，为股东取得丰厚回报，与社会共谋和谐发展”为宗旨，将继续发展资金、技术、设备和人才等优势，持续创新，占领技术制高点，为打造最具竞争实力的国际性一流公司而不懈奋斗。

Xiamen Tungsten Company (XTC), a group corporation went public in Shanghai, is one of the top 500 listed companies in China. It is also the key Hi-Tech enterprise of China, Tungsten Material Industrial Base of National Torch Program, and the first batch of national model enterprise in developing circular economy.

Having a complete tungsten industrial chain and a complete rare earth industrial system, XTC is committed to doing R&D, producing and selling different series of tungsten products and diverse rare earth materials as well as new energy materials. The tungsten fruits include tungsten concentrates, tungsten and molybdenum intermediate products, powder products, wires, plates, cemented carbide products, cutting tools and others. The fruits of the rare earth materials and new energy materials are rare earth oxides, rare earth metals, rare earth luminescent materials, magnetic materials, rare earth hydrogen storage materials and lithium battery materials.

With the aim of “achieving self-value of employees, satisfying customers by service, cheering up stockholders by profits, building up harmony society by enterprise development”, XTC always managed to be the most competitive international enterprise with sustainable innovation, sufficient capital, advanced equipment and talented employees.



## XTC LUOYANG

### 洛阳金鹭



洛阳金鹭硬质合金工具有限公司，成立于2012年，是国有上市公司厦门钨业股份有限公司100%投资的“金鹭”系硬质合金骨干企业。公司注册资金10.5亿元人民币，一期投资13亿元人民币。主要从事钨粉末产品、硬面材料产品、硬质合金顶锤、硬质合金辊环、复合片基体、凿岩工程工具等钨系列产品的生产与销售。

自公司成立以来，公司坚持走专业化、精细化发展道路，生产的“金鹭”系列产品以安全可靠的品质、完善的售后服务体系迅速赢得市场；客户遍布全球二十多个工业发达国家和地区。

公司以“使员工实现价值，让用户满意，实现共赢发展”为使命，以技术创新和管理创新为引领，专注解决耐磨、破碎、压制等工业难题，努力打造世界一流的凿岩工程工具、硬质合金、硬面材料制造商和服务商。

Founded in 2012 with a registered capital of 1.05 billion RMB, Luoyang Golden Egret Geotools Company, as one of the cemented carbide backbones of “Golden Egret” and wholly-owned by its parent company XTC, is dedicated to the production and marketing of the high quality tungsten products including tungsten powders, hard-facing materials, carbide anvils, carbide roll rings, carbide substrates for PDC bit, mining and earth work drilling tools. 1.3 billion RMB was invested into the first phase of its construction.

Since the establishment of XTC Luoyang, the company has adhered to the path of professional and refined development. The “Golden Egret” series of products have quickly won the market with its safe and reliable quality and complete after-sales service system, obtaining customers all over the world in more than 20 industrial developed countries and areas.

We take “to realize staff's self-worth, to satisfy the users, to achieve win-win development” as our mission. Being guided by the innovations of technology and management, we focus on solving industrial problems such as wear resistance, crushing and pressing, striving to build a world-class manufacturer and service provider in the fields of mining and earth work drilling tools, carbide alloys and hard-facing materials.



**CORPORATE  
PRODUCTS**

产品篇

**B**

企业篇  
**ENTERPRISE**

---

产品篇  
**PRODUCTS**

---

荣誉篇  
**AWARDS & HONORS**

---

XTC  
**LUOYANG**



产业链

INDUSTRIAL CHAIN

厦钨集团拥有从矿石开采到硬质合金深加工产品的一体化钨产业链：

从钨源头上控制原材料，保证原料供应及成品品质的稳定；

有效整合资源，降低生产成本，维持价格稳定，增强下游行业的竞争力；

厦钨掌控全球约30%高品味钨资源，年产超3万吨钨冶炼产品，为世界最大的钨品生产和供应商。



钨矿：拥有全球32%钨矿，全球占比第一

钨粉：市场占有率20%，全球排名第一

碳化钨粉：市场占有率28%，全球排名第一

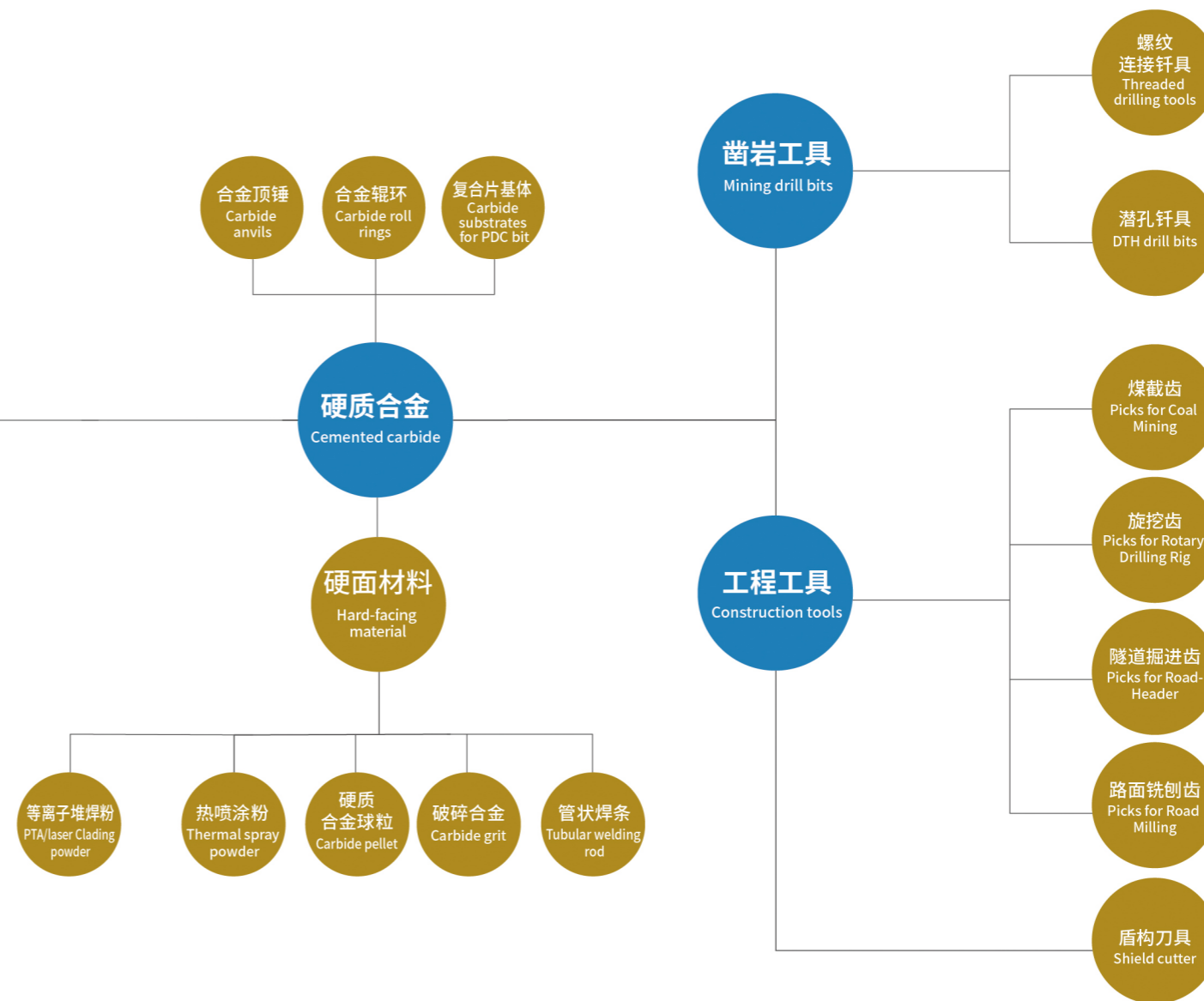
厦钨是世界最大的钨粉、碳化钨粉、棒材和矿用合金供应商，也致力于成为世界级凿岩工程工具供应商。

XTC has an integrated industrial chain from ore to deep processing on cemented carbide:

We can ensure adequate raw materials and stable product quality from controlling the very beginning raw materials.

Our price can be kept stable and enhance competitiveness for the downstream industry by effectively integrating resources and lowering the cost.

XTC is the biggest tungsten production and supply base. It controls almost 30% high grade of tungsten resource in the world and produces more than 30,000tons tungsten products annually.



制粉车间  
POWDER PROCESS WORKSHOP



RTP车间  
RTP WORKSHOP



硬面材料车间  
HARD-FACING MATERIAL WORKSHOP



合金制品车间  
GREAT PRODUCTS WORKSHOP



凿岩工具车间  
DRILLING TOOL WORKSHOP



工程工具车间  
CONSTRUCTION TOOLS WORKSHOP

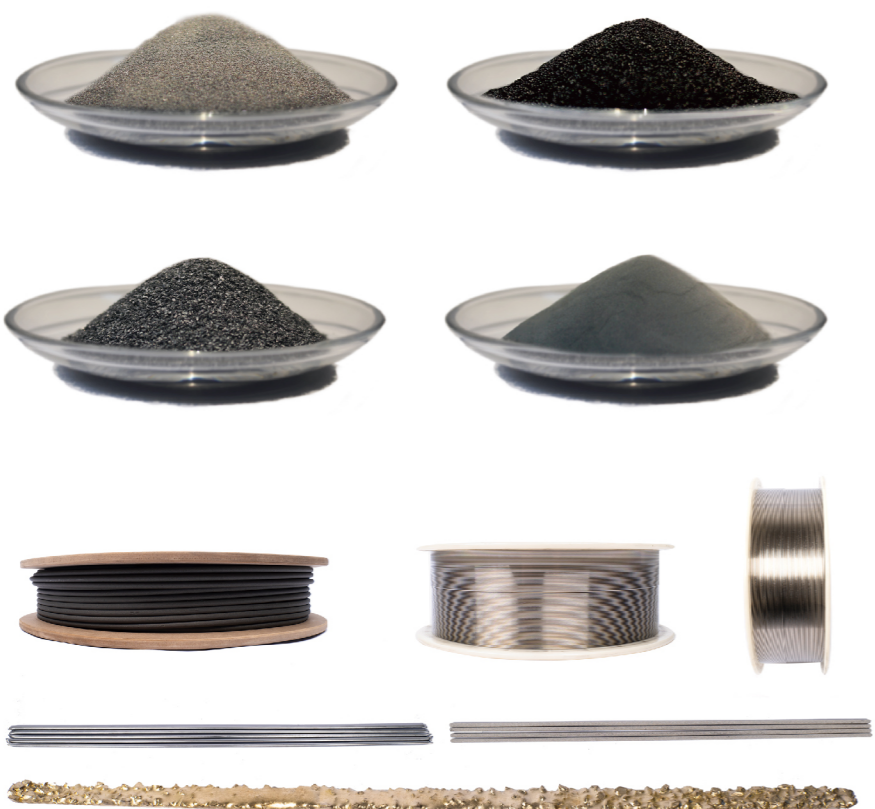


## 硬面材料系列

### SERIES OF HARD-FACING MATERIALS

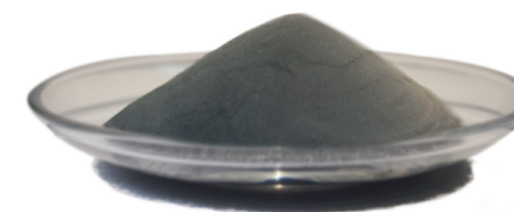
洛阳金鹭在厦门金鹭二十多年丰富的WC类硬面材料的生产经验和技术的的基础上, 引进世界一流设备和技术, 全面致力于热喷涂粉、硬质合金球粒、破碎合金、管状焊条等硬面材料产品的全面开发与生产, 我们潜心打造具有高硬度、高耐磨性、高耐腐蚀性等性能优异的硬面材料产品, 并为客户提供应用解决方案。

Based on decades of production experience and technology for WC series of hard facing materials in the XTC, LUOYANG GOLDEN EGRET GEOTOOLS CO., LTD. introduced world-class technology and equipment, dedicates to develop and produce hard-facing materials including thermal spray powder, carbide pellet, cemented carbide grit and tubular welding rod etc. GEOTOOLS concentrates in creating excellent products with high hardness, high abrasion resistance & corrosion resistance, and provide professional solutions to customers.



## ► 热喷涂钨粉 THERMAL SPRAYING TUNGSTEN POWDERS

金鹭热喷涂粉主要包括碳化钨基喷涂粉和碳化铬基喷涂粉, 其中碳化钨基喷涂粉涂层具有高硬度、良好的耐磨性、耐黏着磨损、耐腐蚀性和高的结合强度。主要应用于石油化工阀门、地质矿山工具、注塑螺杆、印刷机械零件等。碳化铬基喷涂粉比碳化钨基喷涂粉涂层有更高的热稳定性, 使用温度可高至850°C左右, 且涂层具有良好的耐腐蚀性能和抗氧化性能。主要用于气体管道内壁, 泵体内壁等高温腐蚀性环境。



Mainly including spraying powder and tungsten carbide and chromium carbide based thermal spraying powder spraying powder gol-egret, the WC spraying powder coating has high hardness, good wear resistance, adhesive wear resistance, corrosion resistance and high bonding strength. Mainly used in petrochemical valves, geological mining tools, injection screws, printing machinery parts. Chromium carbide based spraying powder than WC spraying powder coating has higher thermal stability, the use of high temperature to 850 DEG C, and the coating has good resistance to corrosion and oxidation resistance. It is mainly used in the high temperature corrosive environment such as the inner wall of gas pipeline and the inner wall of pump body.

## ► 破碎合金 CEMENTED CARBIDE GRIT

主要生产各种钴含量的破碎硬质合金, 产品具有良好的耐磨性, 广泛的运用于各种耐磨用途, 用于做各种磨抛工具, 切削刀片等材料。

Mainly produces all kinds of cobalt content of the broken carbide, the product has good wear resistance, widely used in a variety of wear-resistant purposes, used for a variety of grinding and polishing tools, cutting blades and other materials.





### ▶ 硬质合金颗粒 CEMENTED CARBIDE PARTICLE

洛阳金鹭硬质合金颗粒产品球形度高,合金组织性能优异。主要用于堆焊工艺、PTA复合粉添加材料、管状焊条药芯添加材料等,能大幅度提高基体表面耐磨性。

Luoyang golden egret carbide particles products of high sphericity, the microstructure of the alloy with excellent performance. It is mainly used for surfacing process, PTA compound powder addition material, tubular electrode, core addition material, etc., which can greatly improve the surface abrasion resistance of matrix.



### ▶ 等离子堆焊粉 PLASMA SURFACING POWDER

洛阳金鹭生产的等离子堆焊粉系列包括单晶碳化钨基、粗晶碳化钨基、铸造碳化钨基等不同系列粉末。产品采用最优质的原料,国际最先进的生产设备,厦钨一流的生产工艺;涂层具有高硬度,良好的耐磨性;同时堆焊速度快,焊层致密均匀,稀释率、孔隙率较低,广泛应用于矿山采掘、石油钻探、农机及盾构刀具、机械加工等设备的堆焊和修补。

Mainly produces all kinds of cobalt content of the broken carbide, the product has good wear resistance, widely used in a variety of wear-resistant purposes, used for a variety of grinding and polishing tools, cutting blades and other materials.



### ▶ 管状焊条 TUBULAR WELDING ROD

洛阳金鹭管状焊条产品主要包括以钨及碳化钨产品为硬质相的管状焊条,有很高的耐磨性能,堆焊于石油地质工具及矿山机械零件的金属基体表面,适用于火焰钎焊工艺进行堆焊。

Luoyang golden egret tubular electrode products include tungsten and tungsten carbide products for tubular electrode of hard phase, with high wear resistance and metal surface surfacing in petroleum geology and mining tools of mechanical parts, suitable for welding in flame brazing process.





## 合金制品系列

### ALLOY LARGE PRODUCTS SERIES

洛阳金鹭致力于硬质合金顶锤、辊环、复合片基体的全面开发和生产，以优质的“金鹭”牌WC粉末为原料，采用国际先进的设备生产硬质合金产品，为超硬材料行业和钢铁行业追求更高品质和更高效益提供支持。

XTC Luoyang is committed to the comprehensive development and production of cemented carbide anvil, roller ring and composite Matrix, taking high-quality "Golden Egret" brand WC powder as raw material, producing cemented carbide products with international advanced equipment, we provide support and service for the industries of super-hard material and steel who pursue higher quality and higher efficiency.



### ▶ 硬质合金顶锤 CARBIDE ANVILS

硬质合金顶锤是合成人造金刚石等超硬材料的关键部件，洛阳金鹭顶锤产品以优质细颗粒WC为原料，具有粉末粒度分布集中、杂质含量少、合金抗压强度高优势，综合指标处于世界先进水平，产品规格为 $\phi 103$ - $\phi 240$ 。

Cemented Carbide Anvil is a key component of synthetic synthetic diamond and other superhard materials. The anvil produced by XTC Luoyang takes high quality fine WC as raw material, which has the advantages of concentrated powder size distribution, low impurity content and high compressive strength of the alloy, comprehensive indicators in the world's advanced level, product specifications for 103-240.



### ▶ 硬质合金辊环 CARBIDE ROLL RING

硬质合金辊环是钢铁企业轧制线棒材产品的关键部件，洛阳金鹭辊环产品采用粗颗粒WC为原料，具有优异的耐磨性和抗热疲劳性能，能满足预精轧、精轧、减定径等工况轧制要求，为客户生产优质线材提供保障，产品规格为 $\phi 156$ - $\phi 400$ 。

Cemented Carbide Roller Ring is a key component of steel wire rod products. Our carbide roller ring uses coarse WC as raw material, which has excellent wear resistance and thermal fatigue resistance, to meet the pre-finishing rolling, finishing rolling, reducing sizing and other working conditions, to provide customers with high-quality bar production support, product specifications for 156-400.

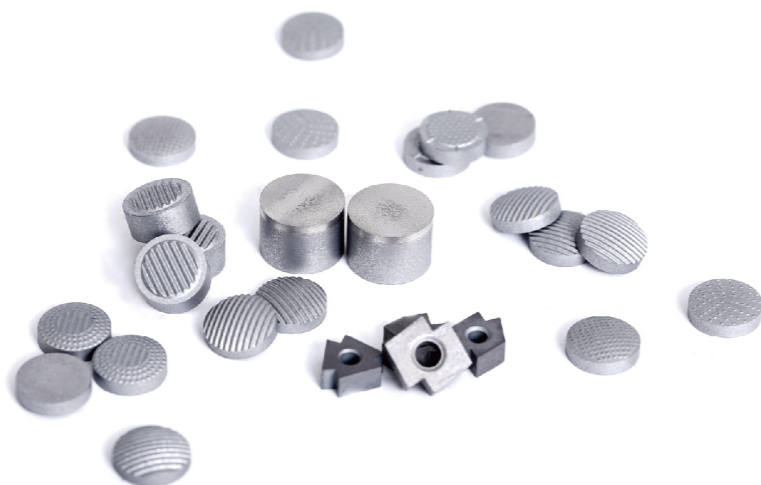




### ▶ 复合片基体 CARBIDE SUBSTRATES FOR PDC

复合片基体(也叫硬质合金基体),与金刚石或立方氮化硼微粉,在超高温、超高压条件下合成PCD或PCBN复合片,洛阳金鹭复合片基体具备强度高、韧性好等特点,产品范围包括油气片基体、地质片基体和刀片基体等。

The PCD or PCBN substrates was synthesized by the carbide substrates and diamond or cubic Boron nitride micro-powder under the ultra-high temperature and ultra-high pressure. The carbide substrates of XTC Luoyang has the characteristics of high strength and good toughness, the product range includes oil and gas sheet matrix, geological sheet matrix and Blade Matrix.



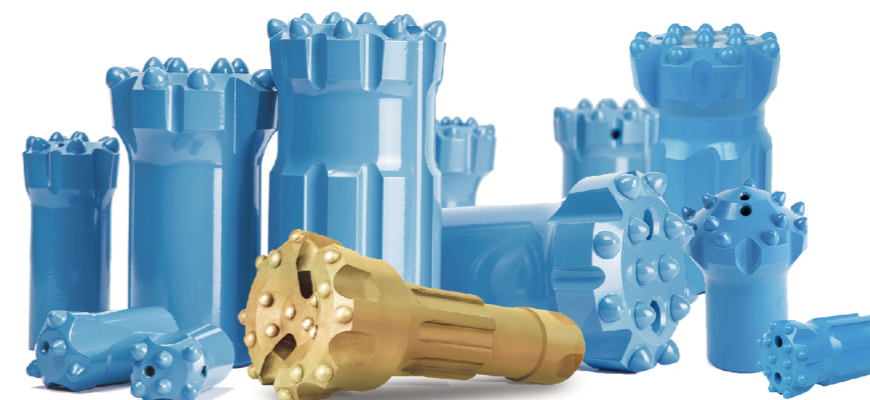
### 凿岩和工程系列

#### ROCK DRILLING AND ENGINEERING TOOLS

洛阳金鹭凿岩工程工具是“金鹭”硬质合金的延伸产品,是“金鹭”牌钨产品链的最后一环。洛阳金鹭在三十多年钨冶炼及二十多年硬质合金技术积累的基础上,采用抗冲击、耐磨损的矿用合金齿,结合优质精锻钢体,经由高精度、高效率、全自动生产线加工装配,打造了具有“三高一长”、品质一流的“金鹭”凿岩工程工具产品。

Rock drilling and engineering tools are the extension of our carbide products, the last part of the “Golden Egret” brand tungsten product chain as well. Luoyang golden egret in the accumulation of more than 30 years of hard alloy and tungsten smelting technology for more than 20 years, with mine alloy tooth impact resistance, abrasion resistance, combined with high quality, precision forging steel body, by efficient automated production line processing and assembly, to create a high starting point, ultra stable quality characteristics of “Golden Egret” tools.

The “golden egret” drill bits, has formed a taper connecting threaded bit, DTH bits and other products. Adhering to the concept of “people without me, people have my essence”, the research and development team will provide the most sharp industrial teeth and the most suitable mining tools for different ores, rock formations and working conditions.





► 螺纹连接钎头 THREADED ROCK DRILLING TOOLS

螺纹连接钎头是通过钎头裤体螺纹与螺纹钎杆相连接,实现凿岩机冲击和旋转的传递,破碎岩石的一类钎具。采用先进的固齿工艺和优化的产品设计,主要用于巷道掘进、井下、露天开采、隧道以及大型工程建设等工况。



Threaded bit by bit pants body thread and thread drill rod connected to achieve percussive and rotary transmission, a kind of drill rock broken out. The use of advanced gear forming technology and optimized product design, mainly used for roadway driving, underground, open pit mining, tunnel and large-scale construction projects.

► 潜孔钎头 DTH HAMMER BITS

潜孔钎头 (也叫潜孔钻头或花键连接钎头) 是通过钎头体花键与冲击器相连接,为冲击做导向和传递旋转的,破碎岩石的一类钎具。主要用于大型矿山(露天、井下)矿石开采,露天建筑用石开采、以及大型工程建设等工况。

DTH bits (also called DTH bits or spline connection bit) is connected through the drill bit spline and impactor, for impact orientation and rotation of a transmission, braze the broken rock. Mainly used in large mines (open pit and underground mining), open architecture, and a large stone mining engineering construction conditions.



► 旋挖齿 PICKS FOR ROTARY DRILLING RIG

洛阳金鹭生产的旋挖齿包含泥沙型、效率型、耐用型、攻坚型及齿座,金鹭旋挖齿采用优质的高性能合金齿、先进的焊接工艺、合理的热处理工艺,设计合理、掘进速度快、砍岩如泥、使用寿命长。

Contains the sediment type, efficiency, durable, and crucial toothholder Luoyang gol-egret production of rotary drilling teeth, the heat treatment process of gol-egret rotary drilling using high performance alloy gear tooth, high-quality welding process, reasonable and advanced, reasonable design, driving speed, long service life, such as rock cut.



► 隧道掘进齿 PICKS FOR ROAD MILLING

洛阳金鹭生产的隧道掘进齿主要分为通用型和攻坚型两大类,通用型主要适用于地质较软工况、高风化、中风化及微风化岩层等工况;加强型掘进齿裤体通过强化处理,大幅提高了裤体的硬度及韧性,使用寿命更长,入岩效率极高。

Luoyang gol-egret gear milling production includes ordinary asphalt series, modified asphalt, cement pavement series and cold regeneration series, raw material products using the most advanced production technology, best quality, with good wear resistance, impact toughness, long service life, high work efficiency.





### ► 铣刨齿 PICKS FOR ROAD MILLING

洛阳金鹭生产的铣刨齿包括普通沥青系列、改性沥青系列、水泥路面系列及冷再生系列等，产品采用国内最先进的生产工艺、最优质的原料，具有耐磨性好、抗冲击韧性强、使用寿命长、作业效率高等特点。

Luoyang gol-egret gear milling production includes ordinary asphalt series, modified asphalt, cement pavement series and cold regeneration series, raw material products using the most advanced production technology, best quality, with good wear resistance, impact toughness, long service life, high work efficiency.



### ► 煤截齿 PICKS FOR COAL MINING

洛阳金鹭生产的煤截齿包括采煤机镐形截齿(耐用型)、掘进机镐形截齿(硬岩型)及无火花系列(攻坚型)，产品采用国内最先进的生产工艺，最优质的原料，具有耐磨性好、抗冲击韧性强、寿命长、作业效率高等优点。

Coal cutter Luoyang gol-egret production including shearer pick (durable), roadheader pick (Ying Yan type) and no spark series (assault type), the product production process using the most advanced, the most high-quality raw materials, has good abrasion resistance, impact toughness, long service life and the work efficiency is high.



### 掘进刀具系列

#### SERIES OF TUNNELING CUTTERS

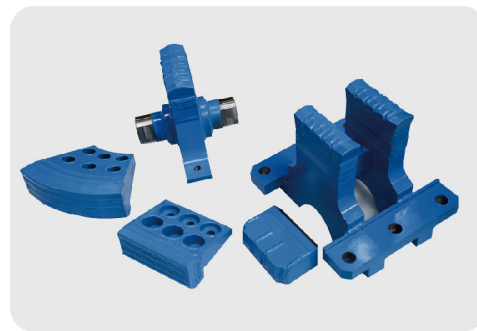
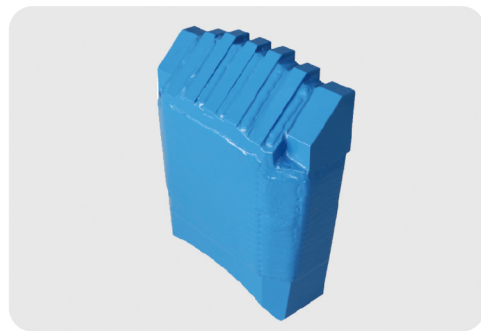
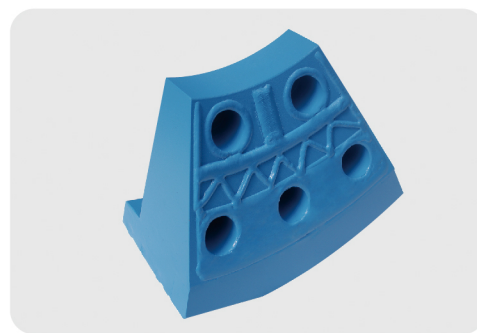
洛阳金鹭掘进刀具产品是“金鹭”硬质合金的延伸产品。洛阳金鹭在三十多年的冶炼以及二十多年的硬质合金技术累计基础上，采用耐冲击、耐磨损的盾构合金，结合优质、精锻钢体，采用先进的焊接技术，先进的热处理设备，打造具有高起点、超稳定的“金鹭”掘进刀具。

Luoyang Jinlu tunneling tool product is an extension of "Jinlu" cemented carbide. On the basis of more than 30 years'smelting and more than 20 years'hard alloy technology, the Luoyang jinlu adopts a shield-driven alloy which is resistant to impact and abrasion, combines high-quality and precision forged steel bodies, adopts advanced welding technology, advanced heat treatment equipment, creating a high starting point, ultra-stable "Jinlu" tunneling tool.





► 软土刀具 SOFT SOIL CUTTING TOOLS



软土刀具包括刮刀、边刮刀、撕裂刀、先行刀等,适用于单轴抗压强度 $<30\text{MPa}$ 的岩土层、砂层等施工工况。“金鹭”掘进刀具采用先进的中频钎焊设备、高性能的优质合金及自主开发的耐磨堆焊材料提高产品的质量,能有效的提高刀具掘进距离,减少换刀次数,降低施工成本。

The soft soil tools include scraper, side scraper, tearing cutter, leading cutter, etc. . They are suitable for the construction conditions of rock soil layer and sand layer with uniaxial compressive strength less than  $30\text{MPa}$ . "Jinlu" tunneling tool adopts advanced intermediate frequency brazing equipment, high-quality alloy and self-developed wear-resistant surfacing material to improve the quality of products, which can effectively increase the tunneling distance of the tool and reduce the number of tool changes, reduce construction cost.

► 硬岩刀具 CUTTERS FOR HARD ROCKS



硬岩刀具包括滚刀、钢制刀圈、镶齿刀圈等,适用于单轴抗压强度大于 $40\text{MPa}$ 的硬岩、超硬岩等岩层。公司与中南大学、北京科技大学等高校展开联合研究,开发了JLDQ001、JLDQ002、JLDQ003三种材质的钢制刀圈,通过先进的真空热处理工艺以及梯度热处理工艺,刀圈适用于岩石强度 $40\text{MPa}\sim 240\text{MPa}$ 之间的硬岩、超硬岩地层以及软硬不均的复合地层;针对中风化以下复合地层,开发翼型齿镶齿刀圈以及镶块刀圈,可以保证长距离的掘进不换刀,提高施工效率。

滚刀轴承以及浮动密封均采用世界一流进口品牌,无尘化装配车间以及精确的装配工艺最大限度提高了产品质量。

Underground mining tools include Hob, steel tool ring, insert tool ring and so on, suitable for UNIAXIAL compressive strength of more than  $40\text{MPa}$  of hard rock, ultra-hard rock and so on. JLDQ001, JLDQ002 and JLDQ003 steel tool rings have been developed in collaboration with Central South University and University of Science and Technology Beijing. Through advanced vacuum heat treatment process and gradient heat treatment process, the tool ring is suitable for hard rock, super-hard rock strata and soft-hard composite strata with rock strength between  $40\text{MPa}$  and  $240\text{MPa}$ , and the wing-shaped tooth insert tool ring and block insert tool ring are developed for composite strata below moderate weathering, it can ensure long-distance driving without changing cutter and improve construction efficiency. Hob bearings and floating seals are imported world-class Brands, dust-free Assembly workshop and accurate assembly process to maximize product quality.



**AWARDS  
& HONORS**

荣誉篇

C

企业篇  
**ENTERPRISE**

---

产品篇  
**PRODUCTS**

---

荣誉篇  
**AWARDS & HONORS**

---



XTC  
**LUOYANG**



## 质量控制

### QUALITY CONTROL

质量是产品生存的根本,是企业发展的立足点。洛阳金鹭是厦门金鹭一脉相承的全新开始,有多年粉末及钨系列生产经验和完备的质量控制体系。发展之初就将优异的产品质量作为起点,稳定的产品质量为发展的保证。洛阳金鹭拥有先进完善的检测设备,完善的过程质量体系(监控)及最终质量检测控制体系,保证出厂产品品质。

Quality is the life of product and foothold of the enterprise development. GEOTOOLS, as the successive & new beginning of GESAC which depending on years of powder and tungsten series producing experience and complete quality control system, also take excellent and steady product quality as assurance of development. GEOTOOLS Utilizes the state of art testing equipment and thorough process control system and final quality control system to ensure the quality of finished goods.





## 荣誉证书

### CERTIFICATE OF HONOR

公司成立至今获得省级以上荣誉6项, 获得多项市级及其它荣誉。

Since its establishment, the company has received more than 6 provincial-level honors, access to a number of municipal and other honors.



## 专利证书

### PATENT CERTIFICATE

公司成立至今获得发明专利证书7项, 实用新型专利证书等其它专利证书30余项。

Since its establishment, the company has obtained 7 patents for invention and more than 30 other patents for utility model.



## 企业文化

### CORPORATE CULTURE



#### 愿景 VISION

世界一流的凿岩工程工具硬质合金、硬面材料制造商和服务商

World-class manufacturer and service provider of cemented carbide and hard facing materials for rock drilling tools



#### 使命 MISSION

使员工实现价值让用户满意实现共赢发展

Make employees realize value, make users satisfied and realize win-win development



#### 远景目标 LONG-RANGE TARGET

以凿岩工程工具为引擎, 以硬质合金和硬面材料为两翼实现产业腾飞

Take drilling engineering tool as engine, take cemented carbide and hard surface material as two wings to realize industry take-off



#### 研究与发展 RESEARCH AND DEVELOPMENT

自公司成立以来, 致力于钨粉末、硬面材料及硬质合金工具、矿山工具等钨系列产品的研发、生产, 以及行业专业解决方案的提供。公司坚持走专业化, 精细化发展道路, 生产的“金鹭”系列产品以安全可靠的品质, 完善的售后服务体系迅速赢得市场; 客户遍布全球二十多个工业发达国家和地区。

Since its inception, the company is committed to tungsten powder, hard surface materials and cemented carbide tools, mining tools and other tungsten products R & D, production, and professional solutions to the industry. The company insists on the development of specialization and refinement, and produces "Jinlu" series products with safe and reliable quality and perfect after-sales service system to win the market rapidly.



风采展示  
SHOW-OFF



公司党建  
COMPANY PARTY BUILDING



IAM-启动、研讨  
IAM-INITIATE, DISCUSS



员工活动  
STAFF ACTIVITIES



IPD-表彰大会 IPD-RecognitionConvention



培训与素质拓展  
TRAINING AND QUALITY  
DEVELOPMENT



营销网络

SALES DISTRIBUTION NETWORK

